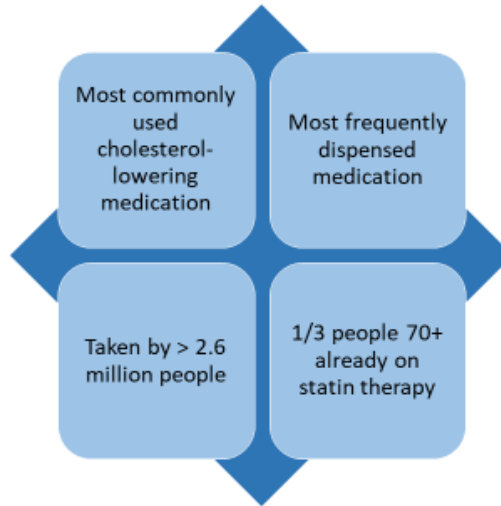


**STUDY  
UPDATE**  
November  
2018



Our first STAREE Study Update was held in Melbourne on Friday 16<sup>th</sup> November. The Lecture Theatre was close to capacity and participants heard about the progress of the trial from Principal Investigator Professor Sophia Zoungas. We were excited to welcome our 4000<sup>th</sup> participant Beryl Reeves, pictured below with Sophia.

**Statins in Australia**



**STAREE**

Community based, randomised, placebo-controlled trial  
Enrolling 10,000 participants across Australia  
Follow up for average 5 years

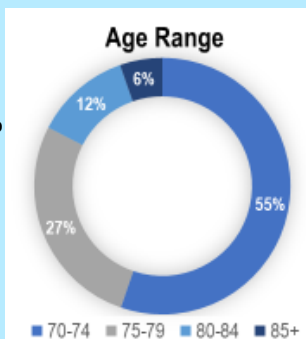
**GP CO-  
INVESTIGATORS**

Over 2,500 GPs signed on  
Almost 1,000 practices recruited  
GPs are important partners in the study and their involvement will contribute to answering questions about statin prescribing in older people

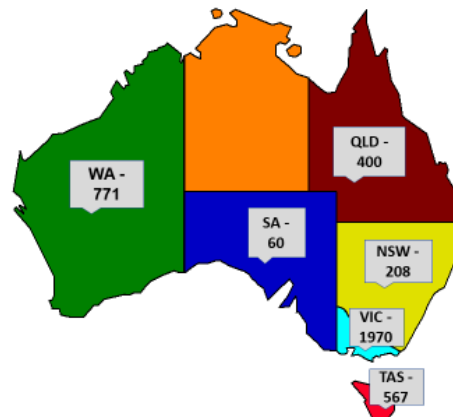


**PARTICIPANT  
DEMOGRAPHICS**

Female – 52%  
Male – 48%



**STAREE participants by state**



**STUDY  
UPDATE**  
November  
2018



## STAREE VISITS

After randomisation, participants are followed up with 6 month phone calls and annual study visits. This contact will continue for an average of 5 years, for some people it will be shorter and for others it may be longer.



**STAREE would like to extend our sincere thanks to you all – our participants make a crucial contribution to this important research.**



## GP PARTNERS

It is really important to follow up any concerns about your medications or changes in your health with your GP as well as calling STAREE.



**Any queries**

1800 770 664



Participants at the **Study Update** (clockwise from top left) Shirley, Harald, Anthony and Robert. Special thanks to Robert for all his photography advice!